



FS wedge wire filter

Description

Capacity: 5000 liters/hour

Replaces: n/a

Power supply: 0.1 kW 230 V 1/N/PE 50/60 Hz
0.1 kW 110 V 1/N/PE 50/60 Hz

Dimensions: 778x823x1764 mm

Minimal workspace: 1750x1850 mm

Weight: 120 kg

Operated by: 1 person

Compatibility: PM/PM BOX, PS-1 connect by 3m hose, M-250

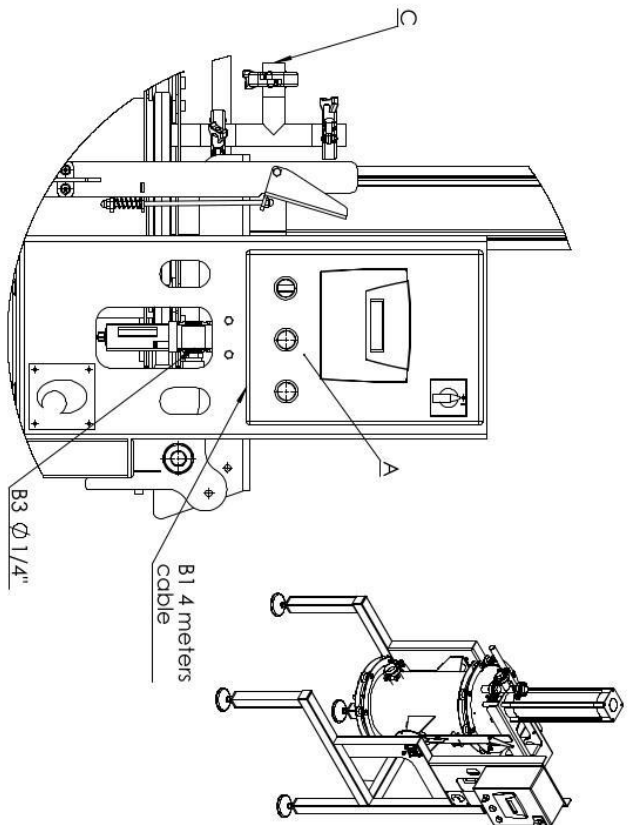
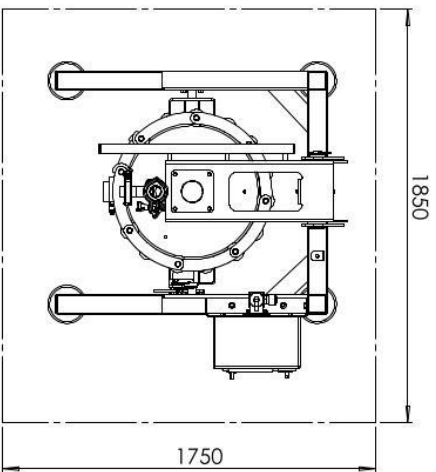
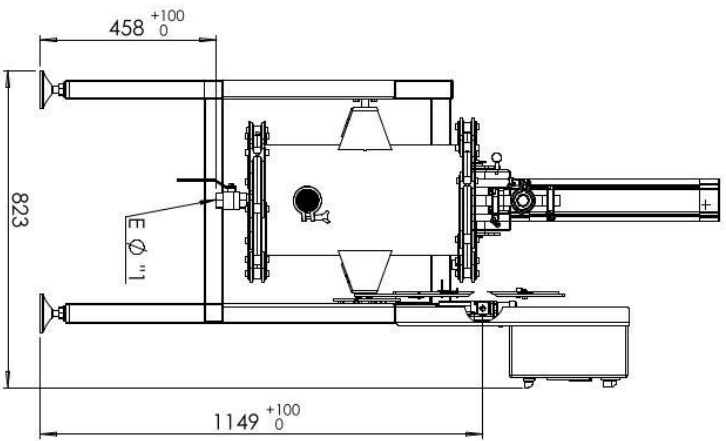
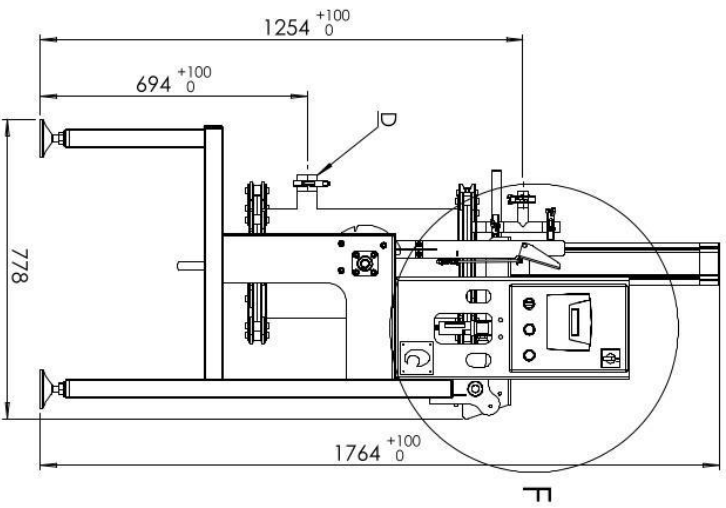
Compressed air: 6-8 bar

Water: n/a

Drain: n/a

Thanks to the use of an innovative wedge wire filter, the FS filter allows for obtaining of a perfectly clean egg liquid. The egg liquid is first transported into the filter using a pump. Next, a piston squeezes the liquid egg through slots with a diameter of 0.2 mm. This process allows to remove 99.9% of all contaminants, which results in obtaining the highest possible level of filtration. The machine is made out of stainless steel EN 1.4301 (AISI 304).





DETAIL F

FS wedge wire filter	
Typical workplaces:	eggs breeding facilities, laboratories, confectioneries, pasta making companies
Capacity:	5000 liters/hour max pressure 3 bar
Power supply:	0.1 kW 230 V 1/1N/PE 50/60 Hz 0.1 kW 110 V 1/1N/PE 50/60 Hz
Water connection:	N/A
Compressed air connection:	6-8 bar, minimal flow 250 liters/hour
Minimal workspace:	1250 x 1850 mm
Dimensions:	778 x 623 x 1764 mm
Operated by:	1 person
Minimal wall clearance:	the rear side - 600 mm
Additional information:	N/A
A B1/B2/B3 C D E	control panel connection electrical/water/air eggs input eggs/yeast outlet damage valve